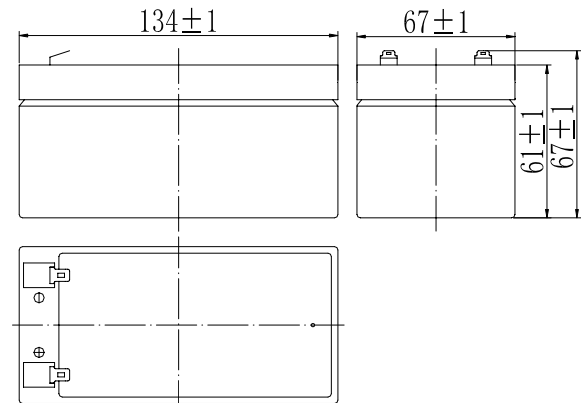


**Specifications**

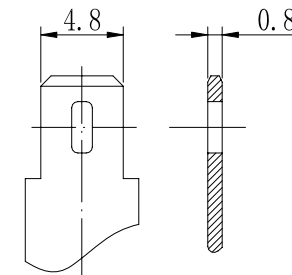
Nominal Voltage		12 V
Capacity (25°C)	20HR(10.5V)	3.4Ah
	10HR(10.5V)	3.1Ah
	1HR(9.60V)	2.15Ah
Dimension	Length	134 ± 1mm (5.28inch)
	Width	67 ± 1mm (2.64inch)
	Height	61 ± 1mm (2.40inch)
	Total Height	67 ± 1mm (2.64inch)
Approx. Weight		1.3kg (2.87lbs) ± 5%
Terminal type		T1
Internal resistance (Fully charged, 25°C)		Approx. 50mΩ
Capacity affected by temperature (20HR)	40°C	102%
	25°C	100%
	0°C	85%
	-15°C	65%
Self-discharge (25°C)	3 month	Remaining Capacity: 91%
	6 month	Remaining Capacity: 82%
	12 month	Remaining Capacity: 65%
Nominal operating temperature		25°C ± 3°C (77°F ± 5°F)
Operating temperature range	Discharge	-15°C ~ 50°C (5°F ~ 122°F)
	Charge	-10°C ~ 50°C (14°F ~ 122°F)
	Storage	-20°C ~ 50°C (-4°F ~ 122°F)
Float charging voltage(25°C)	13.60 to 13.80V Temperature compensation: -18mV/°C	
Cyclic charging voltage(25°C)	14.50 to 14.90V Temperature compensation: -30mV/°C	
Maximum charging current	1.02A	
Terminal material	Copper	
Maximum discharge current	51A(5 sec.)	
Designed floating life(20°C)	10years	

- ◆ Absorbent glass mat technology;
- ◆ Recognized by UL & CE;
- ◆ ABS container.

**Dimensions**



**Terminal**



Terminal T1

**Constant Current Discharge Characteristics (A, 25°C)**

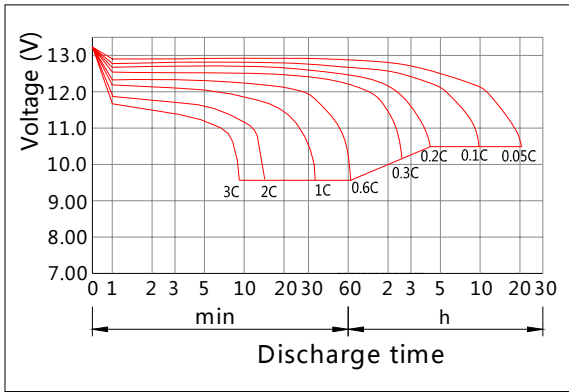
F.V/TIME	5min	10min	15min	30min	60min	2h	3h	4h	5h	10h	20h
9.60V	12.5	7.92	6.27	3.50	2.15	1.17	0.84	0.67	0.57	0.31	0.17
9.90V	12.2	7.68	6.12	3.43	2.11	1.17	0.84	0.67	0.57	0.31	0.17
10.2V	11.7	7.37	5.89	3.32	2.06	1.16	0.83	0.66	0.56	0.31	0.17
10.5V	11.2	7.05	5.69	3.24	2.02	1.14	0.83	0.66	0.56	0.31	0.17
10.8V	10.5	6.65	5.39	3.12	1.96	1.11	0.80	0.64	0.54	0.30	0.16

**Constant Power Discharge Characteristics (Watt, 25°C)**

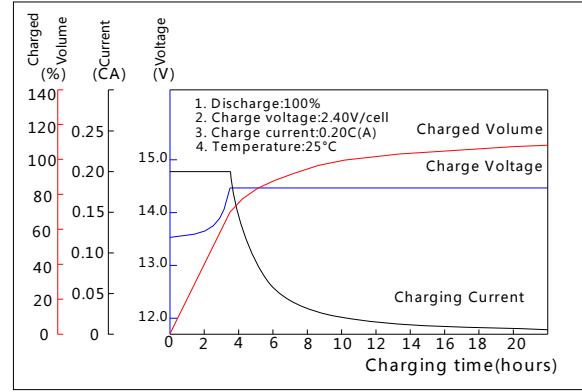
F.V/TIME	5min	10min	15min	30min	60min	2h	3h	4h	5h	10h	20h
9.60V	140	89.3	71.5	40.1	24.8	13.7	10.0	8.02	6.83	3.74	2.01
9.90V	136	86.7	69.8	39.3	24.5	13.6	9.94	7.97	6.79	3.72	2.00
10.2V	130	83.1	67.2	38.1	23.8	13.5	9.87	7.92	6.75	3.70	1.99
10.5V	125	79.5	64.9	37.2	23.4	13.3	9.80	7.86	6.70	3.68	1.98
10.8V	118	75.0	61.5	35.8	22.7	13.0	9.51	7.62	6.50	3.61	1.94

Note: The above characteristics data can be obtained within three charge/discharge cycles.

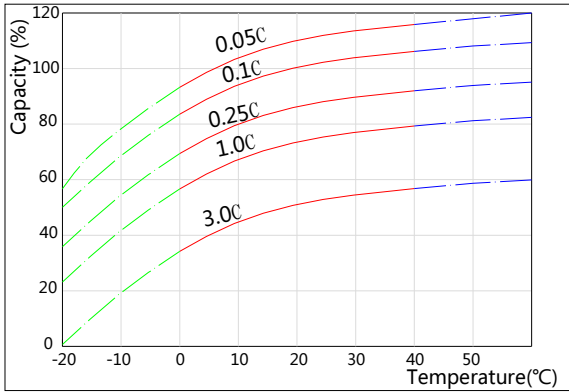
**Discharge Characteristics(25°C)**



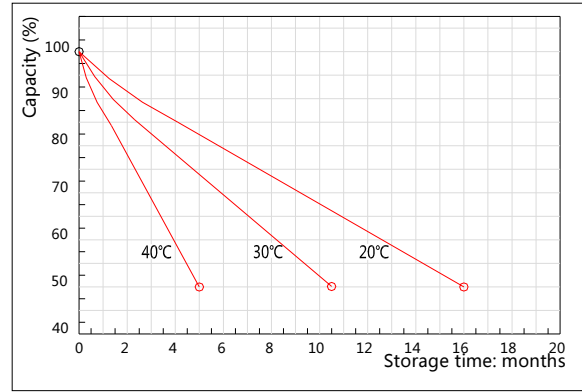
**Charging Characteristics(25°C)**



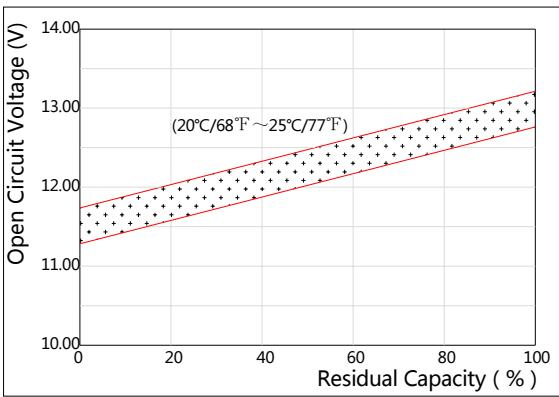
**Effect of Temperature on Capacity**



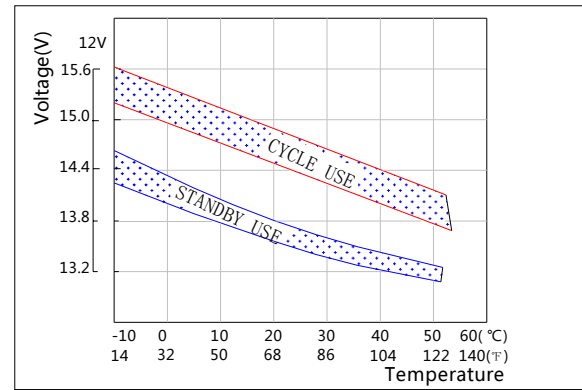
**Self-discharge Characteristics**



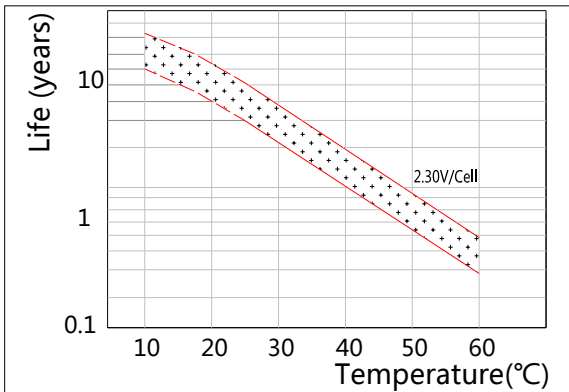
**The Relationship for Open Circuit Voltage and Residual Capacity (25°C)**



**The Relationship for Charging Voltage and Temperature**



**Floating Life on Temperature**



**Cycle Life on D.O.D(25°C)**

